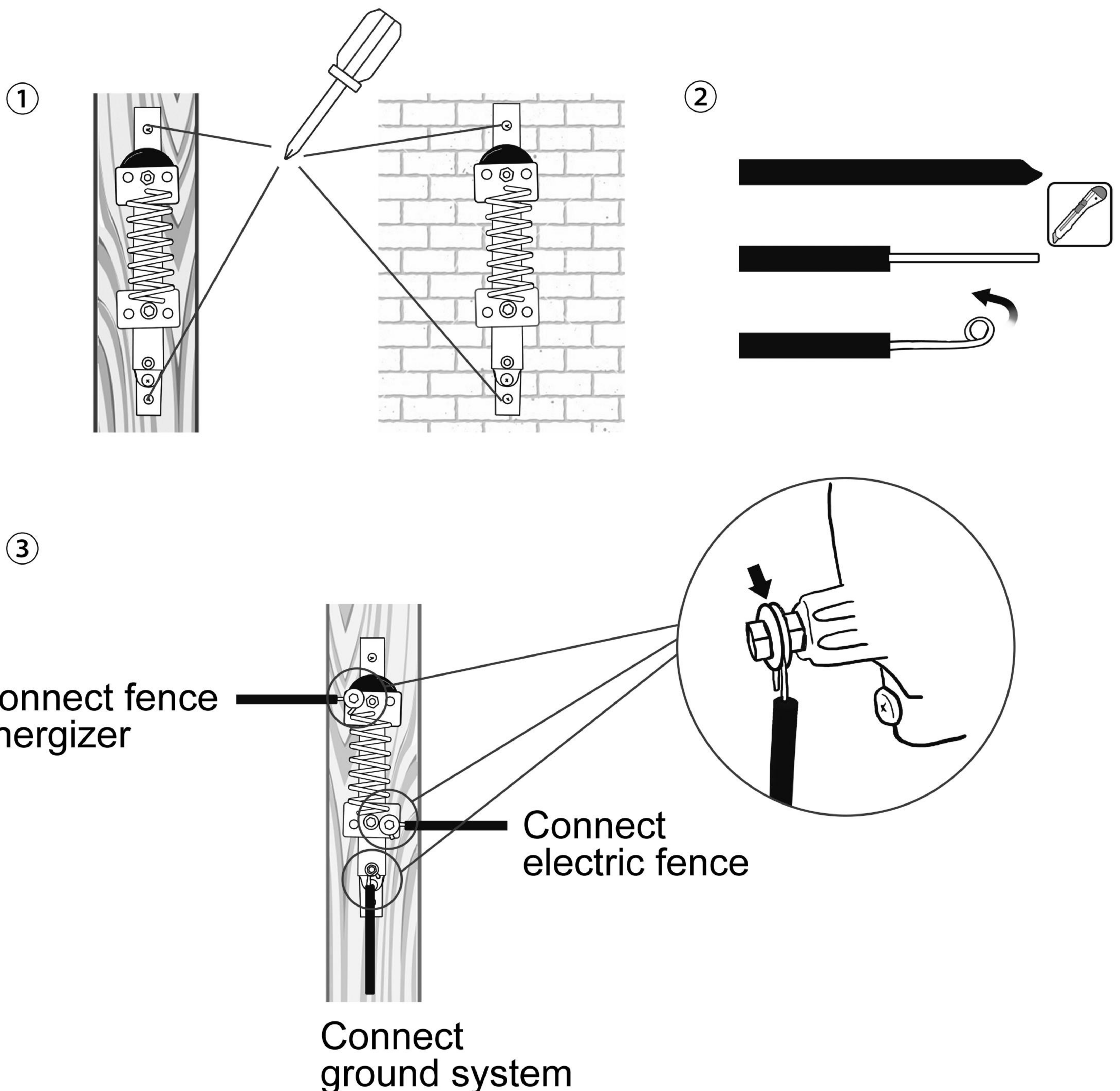


# LIGHTNING DIVERTER KIT

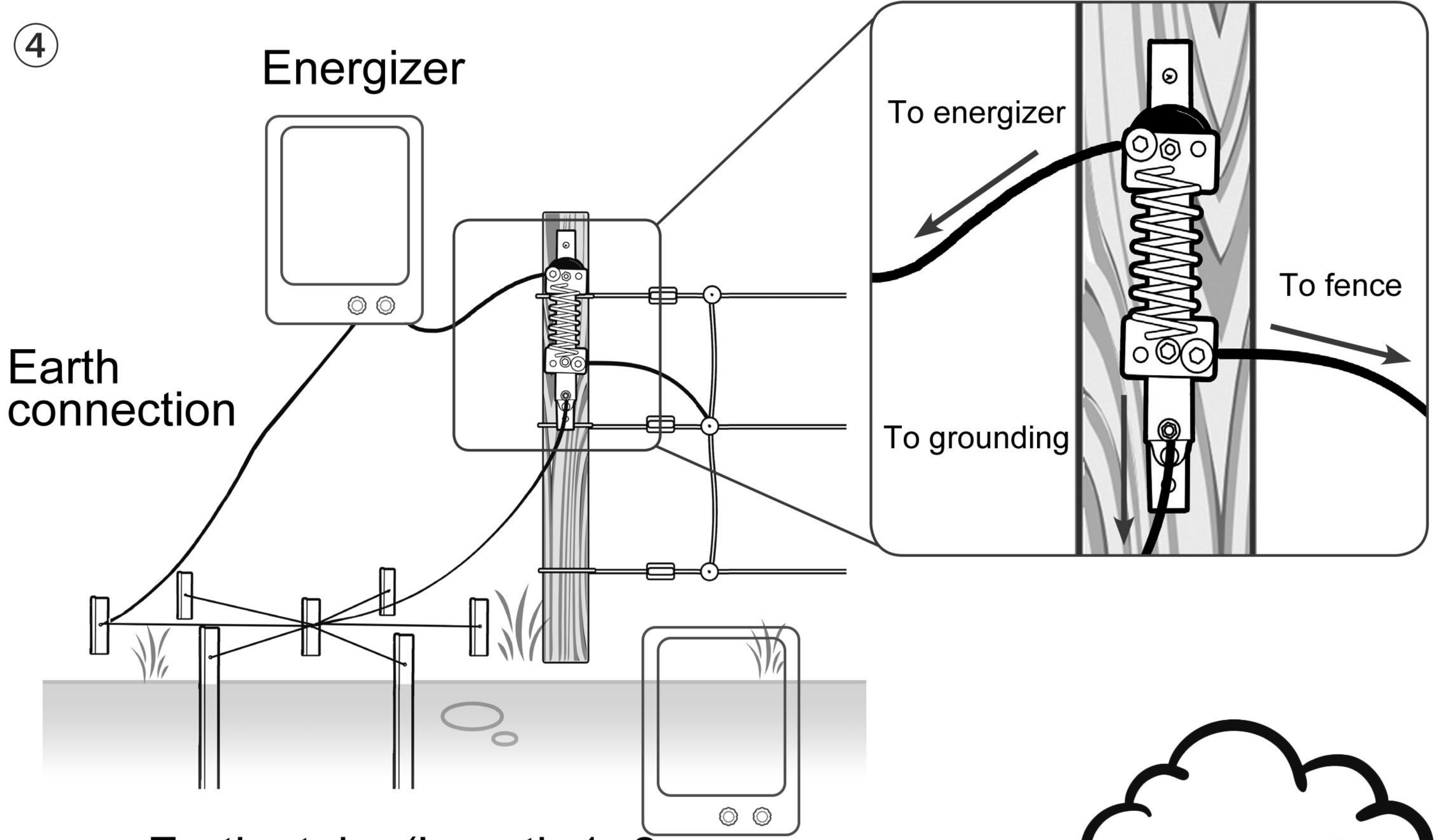
## Lightning Diverter Kit Installation Instruction



1. Made of high grade porcelain
2. Contains lighting arrester, connector clamps, ground clamps and mounting screws
3. Protect fence energizer from damage caused by lightning



④



Earth stake (Length 1- 2 m;  
Distance 3 m)



⑤

The porcelain discharger will have to be replaced after a lightning strike!

